

# BEDFIELD & MONK SOHAM COMMUNITY NEWSLETTER

Newsletter 25/6

23<sup>rd</sup> March 2025

## Bedfield's Art and Craft Club is hosting an exciting Learn-to-Draw workshop at the Community Hub that is open to all

### Learn to Draw in a Morning: Wed 26 March 10 a.m. - midday

Laura, an artist and creative, loves to draw and paint! She takes her inspiration from the diverse nature she has experienced whilst living abroad and from the English countryside as well as from her children and their love of nature and curiosity for the world.

Go to [www.laurajattew.com](http://www.laurajattew.com) to see Laura's beautiful artwork. This is your chance to discover your own creative side and join us to learn how to draw like an artist!

Refreshments will be provided.

£10 per place - payable on booking to secure your place. Please contact Jane Sullivan on 07580 386015 or by email on [andjes@aol.com](mailto:andjes@aol.com)

The Art and Craft Club would like to thank Mid Suffolk District Council and the Community Club for supporting these events.

Sketch  
Sketch  
Sketch

DISCOVER THE CREATIVE IN YOU

Learn to draw like an artist in one morning, while enjoying tea, coffee & yummy cake, and fantastic company!

10am - 12pm

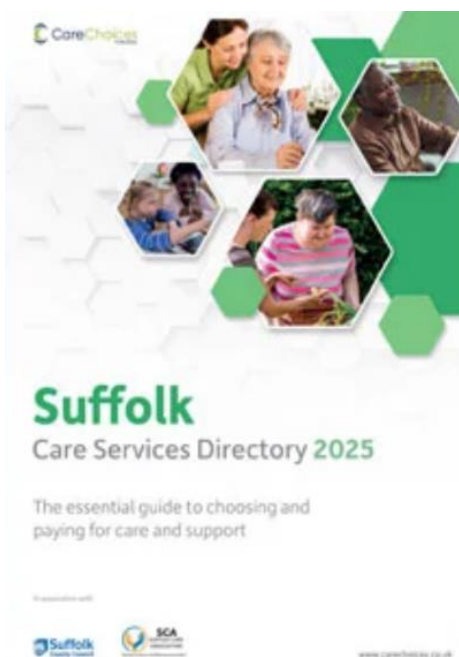
26 03 25



## Suffolk Care Services Directory

The 2025 edition has been published and includes essential information regarding choosing and paying for care and support.

Copies are available to take away from the Hub, or you can view a copy online, or download an e-version by following this [link](#).



## Message from the Friends of Bedfield Heritage

As you will be aware, The Friends of Bedfield Heritage have been leading a project to build a fully accessible, composting toilet at St Nicholas Church, Bedfield.

We have been very busy developing the design of this facility, fundraising for it and seeking the necessary permissions from various statutory bodies. Over £8000 has been raised to date through local events such as Open Gardens, carol singing, craft workshops and cake sales.

We have now:

- Received approval from the Church authorities
- Submitted a planning application to Mid-Suffolk District Council.

*This is where you come in.*

Please use this link [Planning Application DC/25/01110](#) to view and make comment on the application.

Your support may be crucial in securing planning permission. Please, please submit your comments of support to the Council, online. It won't take you long – you will need to register and then complete the following:

*Commentator Type:* Select Member of the Public

*Stance:* Please tick Support!!

*Reason for Comment:* Other

*Your comment:* Please write a short paragraph which details why you are supporting the application. I give some pointers below – but please amend to suit:

- It will be particularly useful for the children of Bedfield Primary School who use the church and grounds as an additional teaching resource; those using the local footpaths; those attending services, weddings, funerals and community events.
- This facility will be of benefit when I am attending the church for a service/event.
- The current bucket toilet is not suitable for use by the frail, elderly or those with accessibility needs and this new, fully accessible facility will be of great benefit to them.
- I do not attend events at the church due to the current lack of suitable toilet facilities.
- The Friends of Bedfield Heritage, a charity comprising of members of the local community, has been developing this project. Over £8000 has been raised to date through local events such as Open Gardens, carol singing, craft workshops and cake sales.
- The church building could be used for more events, which can be held for a longer period of time if this new toilet facility is provided.
- If the church can be used for more events, this will help to preserve this beautiful and historic building for future generations.
- I am a regular user of the public footpaths and this facility will be very useful when I am passing the church.
- I think the siting and design of the building is appropriate in the churchyard.
- The relocated building will be very useful for the church to enable storage of gardening equipment etc.

If you prefer, you can:

- View the plans in the church
- Email your comments to [planningyellow@baberghmidsuffolk.gov.uk](mailto:planningyellow@baberghmidsuffolk.gov.uk) or
- Write to:

Mr O Fayers  
Planning & Building Control  
Babergh and Mid Suffolk District Councils  
Endeavour House  
8 Russell Road  
Ipswich  
IP1 2BX

Please ensure you use the reference **DC/25/01110** in all correspondence.

All comments must be received by the District Council **by 2 April 2025**.

Thank you so much – your support will help us realise this project!

Jane Sullivan  
Chair of the Friends of Bedfield Heritage

## St.Nicholas Church Flower Festival, 20 - 22 June



### St Nicholas Church Bedfield **FLOWER FESTIVAL** 20th-22nd June 2025

Are you a flower arranger, artist, crafter, musician.... who would like to participate in our festival?

The theme is **Children's Literature Through Time**

so plenty of scope to interpret your favourite book, bedtime story, nursery rhyme, poem etc.

If you or an organisation you belong to is interested contact Barbara Corbett on 01728 628337 or mob. 07907 621349.

Musicians contact Debbie Pritchard on 07827 299490

**We would really love to have local children and young people take part.**

### Fancy a Mystery Meal?

We are planning to organise a mystery meal around Bedfield and Monk Soham.

#### **How does it work?**

It's a great way to meet up with old friends and to make new ones and have a fun evening. You join in as a pair – so you can take part with a partner, relative or friend.

The meal consists of four courses – starter, main, dessert and cheese & biscuits.

Each pair hosts one course for 8 people – themselves and three other pairs. You are notified well in advance of which course you need to prepare so you have time to plan ahead. The mystery? You won't know who the guests will be until they arrive! The emphasis is on good company; it is **not** a cookery contest and participants should aim to provide an inexpensive course.

On the day, you will be told where to go for the starter. At the end of each course, each pair is given separate instructions on who to visit for the next course. You shouldn't meet any pair at more than one course during the meal.

Finally, we all meet together for coffee.

We have yet to set a date, but it will take place during the summer.

If you are at all interested or would like more information, **please email us at [bedfieldmonksoham@btinternet.com](mailto:bedfieldmonksoham@btinternet.com)**. We aren't asking for a firm commitment, but we need to know there is sufficient interest before we plan further.



## **Bedfield & Monk Soham Fete**

This year's fete will be held on 12<sup>th</sup> July, and planning has already begun and promises to be a fun afternoon for all the family. There will be a wide variety of stalls including Tombola, White Elephant, Grand Draw, model boats and trains, and Woodbridge Excelsior Brass Band will provide the musical backdrop.



We are always looking for different ideas for stalls or activities. Please contact us at [bedfieldmonksoham@btinternet.com](mailto:bedfieldmonksoham@btinternet.com) if you have any thoughts or suggestions. This annual event brings many members of the community together. If you can offer some time to help before, during or after the Fete, or help with the planning, please let us know.

## **Community Club AGM**

Thank you to those who attended our AGM and to those who provided reports on the year's activities. The minutes, treasurer's report and reports from the Care Café, Craft Club, Football Club, Our Club and Tennis Club can all be found on the Parish Council website [here](#) under "Meetings – current minutes".

## **Regular events**

The **Care Café** is on the first and third Monday of every month from 10:30 a.m. to 1 p.m. It is free of charge and especially for carers and "cared for", the bereaved and lonely.

The **Post Office** in **Bedfield** is open every Tuesday morning from **9.15 a.m. to 11.15 a.m.** in the Community Hub.

The **pop-up Coffee Shop** also opens every Tuesday from **10.00 a.m. to 12 noon**. Scones are always available to eat in or takeaway including Gluten free fruit scones.

As well as having **free internet access**, there is also a **laptop** available for use at the Hub.

The Hub is a collection point for **the Waveney Foodbank**. The most wanted items can be found on their website at <https://waveney.foodbank.org.uk> You can drop off donations on a Tuesday morning or whenever the Hub is open.

The Hub also has a large collection of **books** that you can take **free of charge**. If you choose to make a small cash donation for any books you take, we pass it **all** on to the **Waveney Foodbank**. The Hub also hosts the **Garden Club Seed Swap**.

The Hub hosts **recycling facilities**: **a fabric bank** and **bottle banks** are located on the field, and **battery** recycling facilities are available inside the Hub.

\*\*\*\*\*

**If you are planning an event or have information to share**, please details to [bedfieldmonksoham@btinternet.com](mailto:bedfieldmonksoham@btinternet.com) for inclusion and to Lisa at [lisaj1976@gmail.com](mailto:lisaj1976@gmail.com) for inclusion on the websites. It's all free and helps your event reach a wider audience.

The **village websites**, [bedfieldparishcouncil.gov.uk](http://bedfieldparishcouncil.gov.uk) and [monksohamparishcouncil.gov.uk](http://monksohamparishcouncil.gov.uk) contain all the village information you need. As well as Parish Council information, they carry many updates on local matters, links to clubs and groups, village facilities....and much more. Thanks to Lisa for keeping them up to date.